

# *New Castle Presbyterian News*

*September 2007*



## September Clothing Drive

Clean out those closets -- help yourself and help others!

During the entire month of September, we will be collecting items for the Friendship House's Clothing Bank of Delaware. While all clothing items and bed linens are welcomed, children's, men's, and larger-sized, work appropriate women's clothing are especially needed. It is important that donations be clean and in 'wearable' condition.

All donations should be bagged (large garbage bags work well) and should be left in the Christian Education building in Room 205 during office hours (Mon–Fri, 8:30am–12:30pm) or after church on Sundays. If climbing stairs is a problem, simply leave your donations on the first floor making sure that the bags do not interfere with normal traffic. Tax donation slips will be available should you need one.

This activity supports a ministry of Friendship House that not only makes clothing available to men, women and children in need, it also provides income and work experiences to women who staff the warehouse and distribution operations.

Last year's NCPC response to this call was tremendous and with your help, we hope to do it again. If you need additional information, please call Conchita Showell at 302-832-9226.

**Meeting Ground Workday Planned**  
**September 8, 2007 9:00 AM-1:00 PM**

On Saturday, September 8th, the Mission and Outreach Committee is planning a workday for all members of our congregation at Meeting Ground, a homeless shelter at Clairvaux Farms near Chesapeake City, Maryland. Rev. Carl Mazza is the Executive Director.

As we have done in the past, we will perform duties such as window cleaning, garden tasks, watching the children while the parents do other things, and cleaning the picnic pavilion, etc. We hope to have a larger group than last year's participation of 22 members. The Youth Group joined us last year and really was a big help so we are hoping the youth will join us this year, too.

**To prepare for our work trip, we are asking for each member's help in one of these ways:**

- Donate a new or slightly used preschool toy for the children at the shelter
- Donate new or slightly used activity books, washable markers, reading books, and crayons suitable for elementary age children.
- Donate a monetary gift for us to be able to prepare a hot lunch for all members in the work group and all residents of the shelter. Money can be given to Linda Neel.

Our committee will prepare the hot lunch. Please call Linda Neel to offer help or sign up for the day on the sign-up sheet in the CE Building.

We hope to see you there!!!!!!

“As the Spirit of the Lord works within us, we become more and more like him and reflect his glory even more.” II Corinthians 3:18b

**Book Night at NCPC**

If you want to get an early start on the book selections for the upcoming season of Book Night at NCPC, the books are listed below. No firm dates have been established yet, but they will probably be sometime in October, February and April.

October Selection: **American Gospel** by Jon Meacham

February Selection: **Mountains Beyond Mountains** by Tracey Kidder

April Selection: **Grace (Eventually)** by Anne Lamott

## **A SPIRIT OF CHRISTMAS – VOLUNTEERS NEEDED**

The annual Spirit of Christmas celebration is Saturday, December 8, 2007. This is the 7<sup>th</sup> annual event and is a special occasion, since the church will conclude its 350<sup>th</sup> celebration with the 2007 Spirit of Christmas.

Mark your calendar and make plans to support and participate in this celebration that funds local missions of the New Castle Presbyterian Church. Last year's Spirit of Christmas gave more than \$4,000 to Friendship House.

The New Castle Presbyterian Church and the New Castle Visitor's Bureau jointly present the Spirit of Christmas from 10: a.m. to 5:30 a.m. Events will take place throughout the town of New Castle and in the New Castle Presbyterian Church sanctuary and Christian Education Building. Church events include handbell concerts and choral concerts by the NewArk Choral.

### ***WE NEED YOUR HELP***

The Spirit of Christmas is successful because of the wonderful support from every member of the church. We need volunteers to help setup, greet and host the hundreds of visitors that come each year.

We also need homemade crafts and Christmas ornaments, seasonal home decorations, cooks for homemade soup and breads, all your favorite books, and cookie makers for the free refreshment stand.

We hope you can help once again this year. If you can provide one of the needs, please give either of us a call, send us an e-mail or simply sign up on one of the volunteer pages in the Christian Education Building.

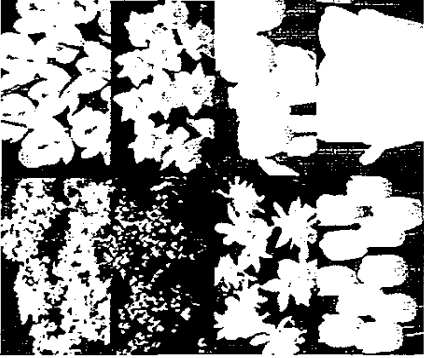
Let us know how you can help make The Spirit of Christmas in 2007.

If you would like to chair one of committees, please let us know. Thank you for supporting the Spirit of Christmas,

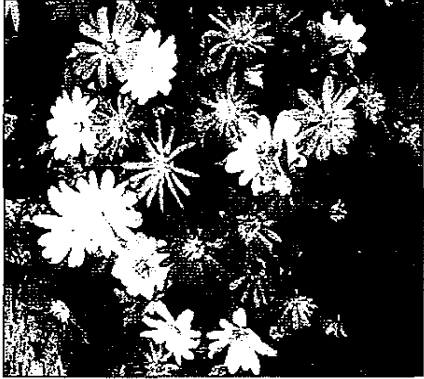
Susan and Irv Lipp,  
Co-Chairs of the Spirit of Christmas  
(302) 652 5712

[irvapr@comcast.net](mailto:irvapr@comcast.net)

[smksml@comcast.net](mailto:smksml@comcast.net)



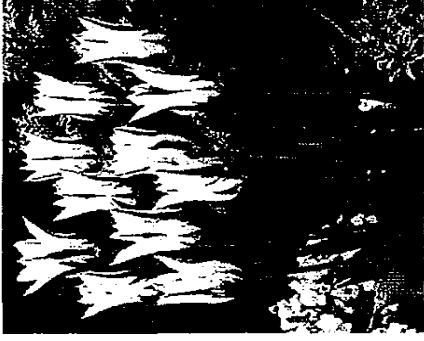
**1. Glorious All White Garden**  
8 distinctive varieties of allium, crocus, elwesii, narcissus, tulip  
5"-28" Blooms April/May  
Bag of 32 bulbs at \$25.00



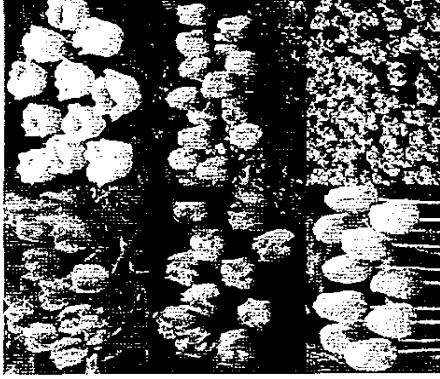
**2. Anemone Blanda Mixture**  
Low growing mixture of blue, pink and white  
4" Blooms Mid-April/May  
Bag of 20 bulbs at \$8.00



**3. Muscari-Blue & White Hyacinth**  
Mixture of lovely blues and white  
6" Blooms April/May  
Bag of 20 bulbs at \$10.00



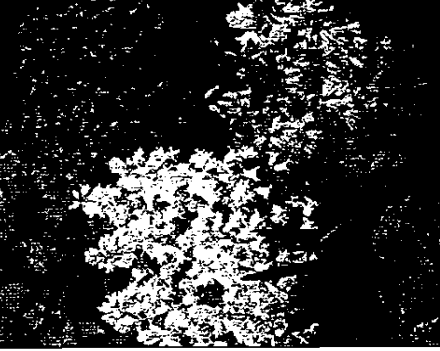
**4. Lily Tulips**  
"Mona Lisa" primrose yellow with raspberry flame  
22" Blooms in May  
Bag of 12 bulbs at \$12.00



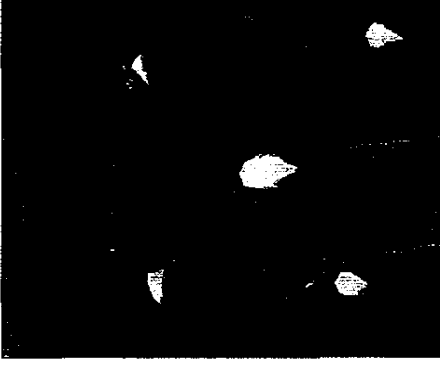
**5. Tangerine/Pink Tulip Garden**  
6 varieties in rose, apricot, salmon, gold, white, rose  
16"-26" Blooms in May  
Bag of 24 bulbs at \$15.00



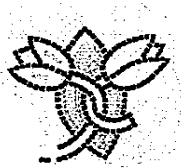
**6. Rock Garden Narcissi**  
Small and distinctive collection  
6"-10" Blooms April/May  
Bag of 12 bulbs at \$10.00



**7. Wood Hyacinths**  
Hispanic mixture of rose, white and blue  
Bag of 12 bulbs at \$10.00



**8. Dutch Iris-Blue Magic**  
Deep blue falls with yellow blotches  
18"-22" Blooms May/June  
Bag of 6 bulbs at \$8.00



## Arasapha Garden Club Autumn Sale Spring Bulbs Order Form

Name: \_\_\_\_\_

Address: \_\_\_\_\_

Phone: \_\_\_\_\_ E-Mail: \_\_\_\_\_

<u>Bulb Choices</u>	<u>No. of Bags</u>	<u>Price/Bag</u>	<u>Amount Due</u>
1. Glorious All White Garden	_____	\$25	_____
2. Anemone Blanda Mixture	_____	\$8	_____
3. Muscari-Blue & White Hyacinth	_____	\$10	_____
4. Lily Tulips—"Mona Lisa"	_____	\$12	_____
5. Tangerine/Pink Tulip Garden	_____	\$15	_____
6. Rock Garden Narcissi	_____	\$10	_____
7. Wood Hyacinths	_____	\$10	_____
8. Dutch Iris-Blue Magic	_____	\$8	_____
		Total Purchase \$	_____

Donation to Garden Angel program to buy bulbs for the historic gardens \_\_\_\_\_

Total Enclosed \$ \_\_\_\_\_

Please make checks payable to Arasapha Garden Club. Pre-order deadline is  
October 5, 2007. Mail check with order form to:

Shirley Davis  
19 East Second Street  
New Castle, DE 19720  
Attn: Autumn Bulb Sale

\*\*\*For best selection, pre-order bulbs and pick up at Autumn Sale.\*\*\*

<p style="text-align: center;"><b>Autumn Sale</b> More Bulbs, Garden Ware, &amp; Local Plants <b>Saturday October 13<sup>th</sup></b> <b>9:30am-4pm</b> <b>Market Square on Delaware Street</b></p>
---

-----  
Spring bulbs sale to benefit the gardens of the New Castle Historical Society at  
the Amstel and Dutch Houses.

## A Special Message from the 350<sup>th</sup> Anniversary Committee

We hope everyone had a great summer. We want to remind you of the upcoming 350<sup>th</sup> Anniversary events for this fall. We hope everyone enjoyed our June Seminar with Bill Quillen, our wonderful float in the Separation Day Parade, our 350<sup>th</sup> Birthday Party and Picnic, Rev. Nancy's July 1<sup>st</sup> service conducted as it may have occurred in 1776 and our participation in numerous mission events.

Now, get ready for fall and mark your calendar for these special events and join us for:

**Sunday Evening September 23<sup>rd</sup> at 6:00 p.m.** A family night supper and program on the historic demolition of the "Old Brownstone Church" and the renovation of our present meeting house back to its present condition.

**Sunday Morning October 14<sup>th</sup> 11:00 a.m.** A special Worship Service led by Rev. Nancy. Enjoy a step back in time to a service and the music as it would have taken place in the 1800's.

**Sunday Morning October 21<sup>st</sup> 11:00 a.m.** A combination service and visit to our historical cemetery located behind the Gambacorta car dealership on Route 9 with a tour conducted by Earl Reed.

**Sunday Evening November 11<sup>th</sup> at 5:00 p.m.** Our gala dinner and program at Wilmington College located on Route 13 to celebrate our 350<sup>th</sup> Anniversary with members and friends from the past and present. Tickets will be \$35.00 each. We hope that this special gathering will be filled with fun, memories and a renewing of old friendships as well as a celebration of our "350 Years Witnessing For Christ". **(Be sure to let the church office know if you have friends and or family that you want us to put on the invitation list)**

**Thursday Morning November 22 at 8:00 a.m.** Our Special Thanksgiving Breakfast ( it will be catered) with the first showing of the DVD of Rev. Ralph Johnson's inspirational Thanksgiving slide show that was a tradition each Thanksgiving during his ministry at the New Castle Presbyterian Church. Start your Thanksgiving Day off with this special event and we will have you out and on to the rest of your Thanksgiving Day activities by 9:00 a.m. Copies of the DVD will be available for a nominal price.

**Saturday December 8<sup>th</sup> the "Spirit of Christmas"** Again this year the Church along with the merchants in the community will sponsor this special day as a mission fund raiser. House tours, craft items, a silent auction, musical concerts and many other events will fill the day.

**Sunday Morning December 30<sup>th</sup> at 11:00 a.m.** A special service concluding our 350<sup>th</sup> Anniversary Celebration remembering the past and celebrating the future of the New Castle Presbyterian Church with our Anniversary Anthem and Hymn.

**Monday Evening December 31<sup>st</sup> at 5:30 a.m.** A New year's Eve Progressive Dinner followed by a church service closing out our year of Celebration.

- Carol Mayhew

# **WANTED: ADULT CHOIR MEMBERS**

- **POSITIONS OPEN:** Soprano, Alto, Tenor, and Bass. No others need apply.
- **PHYSICAL QUALIFICATIONS:** Must be able to carry light musical notes part way across the sanctuary. Must have sufficient vision to see director less than twenty feet away.
- **EXPERIENCE:** No application accepted from persons who have not sung, hummed, or whistled in the tub or shower.
- **WAGES:** Satisfaction and joy in God's service.
- **FRINGE BENEFITS:** Social Security - we promise you the security of social fellowship with other members of the choir.
- **HOURS:** Sunday mornings, with occasional opportunities for overtime (at above wages).
- **VACATION:** Missed rehearsals and worship services are primarily a matter of conscience and as long as you have the ability to return the glares and pointed remarks of the director.
- **RETIREMENT:** No particular age, but it is generally determined by prayer, printed notes getting too small, robe too heavy, notes too high, sanctuary too hot (or cold), or organist unable to play the notes you sing.

**REHEARSALS: WEDNESDAYS 7:30-9:00PM**

---

## **Directory Update**

Arline Olds has a new phone number. She can be reached at 302-328-5533.

## **Meals on Wheels**

NCPC does not come up in the rotation for September. We resume beginning the week of October 1<sup>st</sup>. If anyone is interested in delivering meals to shut-in Seniors in the New Castle area, please contact Ellen Matthews at 302-777-1133.

### **Monday**

Susan Flook  
Phoebe Dill

### **Tuesday**

Jean Swanson

### **Wednesday**

Dot & Jason  
Campbell

### **Thursday**

Cynthia Robbins  
Nanette Nichol

### **Friday**

Shirley Knox

## **Visiting Preacher**

On September 30, we are pleased to welcome an old friend to the leadership of worship at New Castle Presbyterian Church during Pastor Nancy's vacation. Former Interim Pastor Bob Bolt will be preaching for us that day. Come and join us in worship!

## **Volunteers Needed**

The Volunteer Department of St. Francis Healthcare Services is actively recruiting new volunteers. We invite men, women, and students from the community, to join the ranks of our Volunteer Staff. Intrusting volunteer positions, which offer interaction with staff and patients, are an excellent way for students to gain knowledge of the health care professions. Adult volunteers, with some discretionary time available to contribute to their community, find volunteering in the hospital and nursing home a rewarding experience. For more information, please call Ana L. Rutkowski Volunteer Services Coordinator at (302)421-4104 or email [arutkowski@che-east.org](mailto:arutkowski@che-east.org).

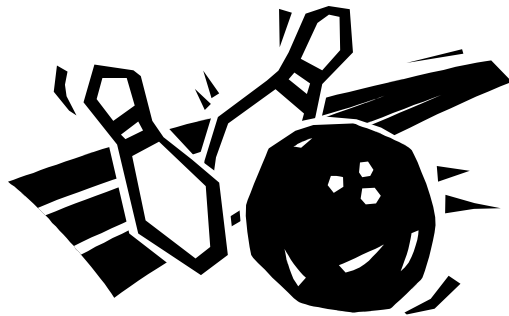


**Christian Education Committee  
Announces an  
Family Afternoon of Bowling!**

Sunday, September 30<sup>th</sup>  
12:30 - ??

Families are invited to meet at Bowlerama  
(Route 9 in New Castle) after church for an  
afternoon of bowling.

Lunch will be on your own at the bowling alley.



Please sign up by  
Sunday, September 23  
in the Christian  
Education Building

## **BITS AND PIECES FROM THE PAST**

### **Thoughts About Cemeteries**

Cemeteries are stark evidence that life on this earth comes to an end. Try as we might to prevent it, time takes its toll and others take our place. Many a gravestone, fallen and half buried, falsely proclaims "gone but not forgotten." Memories of even the high-born and mighty survive only for a while before being crowded out.

To the casual observer those that rest so quietly beneath the sod are non-entities. Yet at one time they breathed, loved, laughed, cried, sinned, repented, and struggled like all of us. Their contribution to the world might have been no greater than that expressed by an anonymous nineteenth century epitaph, "She did what she could." Even so, each one was a part of the continuum of the human race, a link in the chain that stretched backward from their time to the beginning.

To judge the dead by a cemetery record is a risky business, because a tombstone, or lack of it, is such a poor measure of what a person was. The stone might represent a measure of love, a measure of wealth, or even a measure of sacrifice to bring in death a dignity never enjoyed in life. That there is no stone for the friendless, the poor, or those having a deep religious conviction against graven images, subtracts not one whit from their dignity as God's creatures.

Cemeteries tell of national origins, population shifts, family ties, faith, war, epidemic, the sadness of a child's death, honors accorded old age and the fallen hero. The record is there for those with the imagination to read it.<sup>1</sup>

### **Our Church Burial Sites**

The New Castle Presbyterian Church has records of 671 burials and has had at least three burial sites, possibly four. The earliest stood on the site of the present day Christian Education Building and was in use from ca.1657 to 1801. The 1802 cemetery is just East of State Route 9 South near the outskirts of town, and the third, and the newest, a memorial garden for cremated remains near the Christian Education Building, was started in 1984. A fourth site might be questionable.

#### **The 1657 Burying Ground**

The earliest burials were in the upper end of the Dutch meeting house grounds (now 26 and 28 the Strand).<sup>2</sup> It had brick walls about four feet high. It was 20 feet wide and perhaps 50 feet long, typical of family plots. For the next hundred years or so the burial ground was in transition. When the walled-in part became filled, the overflow of graves moved slowly toward Second Street. When the foundations of the Gothic Brownstone Church building were dug in 1854, some graves had to be removed. Then, when a century later the Brownstone was demolished, graves that were under the floor were destroyed by large stones that fell on them. Likewise, before the Christian Education Building was built in 1957, the surviving grave stones had to be moved hither or yon. Fourteen are now at the west end of the restored 1950 meeting house and along Second Street. Acid rain has so eroded them that only a few are still readable. Three Pastors, S. Beattie Wylie, Russell Jaberg, and Ralph Johnson, are buried here. A memorial stone for Pastor John Latta rests in the meeting house floor. Supposedly, many small stones were moved from this site to the 1800 cemetery but I have not found convincing evidence of it. An oil painting by Delaware architect/artist Lausett Rogers, which hangs in the

Christian Education Building, inadvertently shows compelling evidence about the 1657 burying ground. It depicts two "Father, Son, and Holy Ghost (FSHG)" grave stones at the rear-center of the Brownstone Building.<sup>3</sup> The Rogers painting also shows part of the brick wall which surrounded the first cemetery plot. These two stones are only symbolic of fifteen or so more which are visible in a photograph taken when the Brownstone Building was being demolished. Two medium-sized distinctively shaped white marble "FSHG" stones are clearly visible in this picture. They stood about where the southwest end of the Christian Education Building stands now. Twenty or more very small stones are clustered in groups, perhaps of families.

An oil painting by Emily White, which shows the Memorial Garden end of the Christian Education Building, depicts three grave stones that are not there now.

### The 1800 Cemetery

Around 1800, the Church's Board of Trustees agreed that: 1) burying grounds in the improved parts of the town can be injurious to the inhabitants' health, 2) the present burying ground is low and wet and unfit for burials, and 3) after this day, strangers and others shall not be permitted to be buried in the said grounds except those who already have a family member buried there. Surprisingly, the Trustees did not mention the scourges of yellow fever that had ravaged the Philadelphia — Wilmington area off and on for a decade or more. The cause of yellow fever was not known at the time.

On October 8, 1804, John Stockton, a member of the church, deeded to the church Trustees one-half acre of land west of town for a cemetery for one dollar. In 1810, they bought another half-acre and again another in 1832. Thus, the cemetery now contains one and one-half acres and is square in shape. Its layout is unusual since about one-third of the grave stone inscriptions face more or less due east, whereas two-thirds of the lots are laid out parallel to the fence line. The lots in which the stones face due east tend to be much larger family lots, many with corner markers and some with cut-stone border-copings. Stone shapes vary: rectangular, flat, round topped, obelisks of many heights, "FSHG" stones, above ground vaults, vertical flat stones, and modern-style low profile granite stones. Newer stones are less likely to have epitaphs.

With the coming of the New Castle and Frenchtown Railroad in 1827 and the heavy industry which followed, railyards quickly fanned out toward the wharves and berths for ocean-going vessels (now Battery Park). As the result, the rail-line cut off the cemetery from the town proper and left it without an access. In 1832, the Trustees negotiated with the railroad to transport funeral parties to the cemetery in railcars, so long as the time set for the funeral did not interfere with railyard traffic. Later on, the railroad agreed to construct and maintain a short road leading to the cemetery entrance. This road, which is now behind Gambacorta Motors' follows the path of the original road to Frenchtown, Maryland.<sup>4</sup>

The cemetery was enclosed in 1886 by a substantial six-foot-high Victorian-style cast-iron fence and gates. In 1925, the Trustees reorganized all of the cemetery records: regulations, titles to properties, plot lines, trust funds given for perpetual care, easier maintenance, etc. Plat maps use a number-letter grid system to locate 429 numbered plots, each with the deed owner's name. The grounds are professionally designed for easy access to all lots. A one-way gravel road snakes around the inside perimeter of the fence.

According to church archives, the Delaware State Board of Health's section on Vital Statistics began to issue death and burial certificates in 1927 and began to remove individual fences around plots in 1934.

### The Memorial Garden

In 1984, the Session established a memorial garden in which a deceased person's ashes may be interred. A 36" x 45" x 8" bronze plaque mounted on a granite base shows the names, and exact birth and death dates of those so honored. The garden is in 19 x 39 foot secluded area for meditation, prayer and remembering. It now lists 18 interments with an ultimate capacity of 56.

### A Potter's Field?

The fourth cemetery site at the end of Second Street might be questionable. Writing in 1952, Margaret Virginia Hughes, who grew up in this church, wrote that although she "had been unable to find any confirmation of the fact, there did exist a burying ground where Presbyterians were buried at Bull Hill. When I was a child, I can remember boys digging up bones and skeletons from this area. There are no tombstones or markers there now."<sup>5</sup>

Assuming Hughes was correct, it is quite possible that this site was a potter's field, a burial ground for slaves, or a site in which unbaptized family members who could not be buried in hallowed ground were interred. Consider the following: In 1855, the Trustees of Mount Pleasant Methodist Church (built 1838) in Bellevue, Delaware, resolved "that all strangers hereafter brought to this churchyard for burial shall be buried in what shall be called 'strangers row' on the lower side of the graveyard next to the fence beginning at the farthest corner from the church." This area contains sixteen graves, all unmarked, being identified only by the sunken areas that formed when the coffins rotted long ago. Here, as in our 1801 Presbyterian cemetery, the word "stranger" more than likely meant "non-Christian." An 1897 dictionary defines "stranger" as "one not admitted to communion or fellowship."

### Thoughts About the Future

Today, thanks to our diligent Trustees, all of our burial properties are well kept islands of tranquility. I recognize many of the surnames as being prominent early citizens: Black, Cooper, Couper, Darrough, Dungan, Eliason, Gray, Janvier, Johns, Kerr, Proudfit, Smith, Spotswood, and others. However, the 1800 cemetery looks out at the backsides of unsightly commercial establishments, debris, and undergrowth. It is a sorry sight but the owners could spruce it up a bit or even beautify it. All of the people buried here, their families and this congregation deserve that much respect.

Herbert T. Pratt  
Church Archivist

1. Herbert T Pratt, "Mt. Pleasant Cemetery," Delaware Geneological Journal, vol. 2, no. 3, April, 1984, pp. 49-50.
2. Anon, "Historical Notes: the Presbyterian Church," New Castle, Del., nd, p1, Church archives.
3. So called because of the three pointed lobes at the top. The center lobe is taller than the other two.
4. For details on the purchase of this property, see:  
James T. Eliason, Jr., "Guidelines for the Establishment and Development of the Presbyterian Church Cemetery in New Castle as presented to the Anniversary Service . . . held on Sunday May 1st 1932," typescript, 7 pp., Eliason papers, Church Archives.
5. Margaret Virginia Hughes, "History of the New Castle Presbyterian Church," May 17, 1955, unpublished manuscript, pp 3-5, Church archives.

NOTE: The author appreciates the contributions of the following people to this article: Bill Anthony, Vic Clark, Bruce Gordon, Mary Pratt, Earl Reed, Nancy Rowland, and Louise Thornton.

*Trials of a Cemetery Trustee*

40 South 16th Street,  
Allentown, Penna.,  
July 6, 1934.

Mr. J. T. Eliason, Jr., Secretary,  
Board of Trustees,  
New Castle Presbyterian Church,  
New Castle, Delaware.

Dear Mr. Eliason:

Until receipt this morning of your letter of the 3rd, it was my impression that I had written you that last fall my family took my mother down to inspect the Taggart cemetery lot at which time, although most of my family were in accord with the views the trustees entertain, my mother was very decidedly opposed to any removal of the fence.

A letter goes to her today, however, to find out whether she has now changed her mind and as soon as I hear from her I will advise you, but in the meantime, of course, I would earnestly request that you do not move the fence without her consent. I will try to change her last expressed opinion, but if she still holds to it then I shall certainly want to keep the fence up during her lifetime, which certainly cannot be widely extended, as four weeks from today she will be 86. Agreeing with you that it would seem quite impractical to consider any permanent repair of the fence, might it not be possible to keep it thus temporarily in fair condition by some not too great expense? and how much would you think this might be?

My daughter remarks that one reason my mother objected to the removal of the fence was that "the chickens were running all around the rest of the cemetery". Would it be possible to have their means of entrance blocked? This might help me change my mother's views.

Yours sincerely,

*Nicholas Stahl*

NS/ETD

P.S. On further thought, I think it will be wiser to await your reply to this letter before writing my mother about the matter.

*NS*

## The Founding of the first Presbytery in American

The leading pastor in the founding of the Presbytery was Francis Makemie. He was born in 1658 at Remelton, Ulster, Northern Ireland to Scottish parents. He was educated at the University of Glasgow. He returned to Ireland and was ordained probably in 1682 by the Presbytery of Laggan. The date is uncertain because Presbyterians were being persecuted at the time. He soon sailed to Virginia to answer a call to serve tenants on a tobacco plantation.

Makemie lead an extremely productive life for the next twenty years. He served or organized churches in Virginia and on the Eastern Shore of Maryland, and became active in business. The business was necessary because Presbyterians in the area were too poor to pay him. He also spent several years on the island of Barbados. He married, and had two children, who did not survive to maturity.

He carried on a correspondence with Increase Mather in Boston, disputed with the Quakers, and wrote several religious articles for publication.

It was necessary to obtain a dissenter's license to preach in Anglican Virginia, and soon also in Maryland. Anglican priests slowed the process by referring it to the governor for a decision. Also, a new church building had just been erected in Rehoboth under the leadership of Makemie. The Anglican rectors requested that it be turned over to them by the court for Anglican use. This matter was sent to the Bishop of London for a decision.

Anglican establishment was now a real threat. In 1706 there were four ministers in Maryland, two in Delaware (John Wilson at New Castle and Samuel Davis at Lewes), and on at Philadelphia. By drawing these congregations into and authoritative church court, religious tolerance would be strengthened. Thus was born the Presbyterian Church in America. This was Makemie's greatest achievement. The first meeting was held in Philadelphia in the spring of 1706. The second was held in New Castle in December of the same year to ordain John Boyd as pastor of the church in Freehold NJ.

Following this Presbytery meeting Makemie and Rev. John Hampton of Snow Hill MD set off to visit Boston. Apparently they were attempting to draw other congregations into the Presbytery. When they stopped at New York City, they received an invitation to dine with the governor, Lord Cornbury. The next day Makemie was asked to preach at the local Dutch Reformed and French Reformed churches. Cornbury refused them permission. He was leading the persecution of Dissenters in that colony. Makemie then held a church service in a private home in January with all the doors and windows open. In that service he baptized a baby. Cornbury then issued a warrant for their arrest for preaching without a license. Their licenses to preach in Virginia were refused. Makemie was imprisoned for six months, then tried. He was found innocent. Religious freedom was established.

- Bob Swick

# September 2007

Sunday	Monday	Tuesday	Wednesday	Thursday	Friday	Saturday
2 10am-Worship-Communion 11am-Fellowship Hour	3 Labor Day Office Closed	4 7pm-Christian Ed.	5 7:30pm-Adult Choir	6 6:45pm-Col. Chimers 7pm-Al-Anon 8pm-Cel. Ringers	7	8 Meeting Ground Workday
9 10am-Sunday School 11am-Worship 12pm-Fellowship Hour	10 7pm-Deacons	11 Youth Pinwheel Project 6:30pm Spirit of Xmas Mtg	12 7:30pm-Adult Choir	13 6:45pm-Col. Chimers 7pm-Al-Anon 8pm-Cel. Ringers	14	15
16 10am-Sunday School 11am-Worship-Baptism 12pm-Fellowship Hour Youth Pinwheel Project	17 7pm-Eng. Country Dancers 7:30pm-Trustees	18	19 7:30pm-Adult Choir	20 6:45pm-Col. Chimers 7pm-Al-Anon 8pm-Cel. Ringers	21 Youth Pinwheel Project	22
23 10am-Sunday School 11am-Worship 12pm-Fellowship Hour 6pm-Potluck Supper (Meeting House Renova.)	24 7pm-Session	25 Presbytery - Trinity P.C. 7:30pm-350 <sup>th</sup> Committee	26 7:30pm-Adult Choir	27	28	29
30 10am-Sunday 11am-Worship-Bob Bolt 12pm-Fellowship Hour 12:30pm-Familv Bowling						

**\*Nancy is on vacation 9/28-9/30 and on study leave 9/16-9/20**

New Castle Presbyterian Church  
25 E. 2<sup>nd</sup> Street  
New Castle, DE 19720  
Phone: (302) 328-3279  
Fax: (302) 328-5670  
E-Mail: [ncpc1651@verizon.net](mailto:ncpc1651@verizon.net)  
Office Hours: 8:30 a.m. - 12:30 p.m.

**NON-PROFIT ORGANIZATION**  
**U.S. POSTAGE PAID**  
**NEW CASTLE, DELAWARE**  
**Permit No. 36**

**Address Change  
Requested**

Contact the New Castle Presbyterian Church office:  
[ncpc1651@verizon.net](mailto:ncpc1651@verizon.net)

**Contact: The Rev. Nancy Rowland at:**  
[ncpcpastor@verizon.net](mailto:ncpcpastor@verizon.net)

Next Newsletter Deadline is **September 24, 2007.**